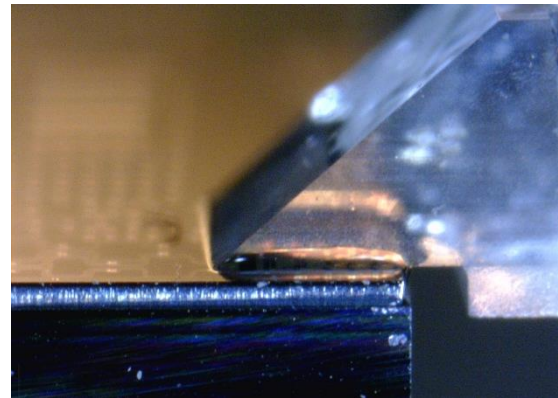
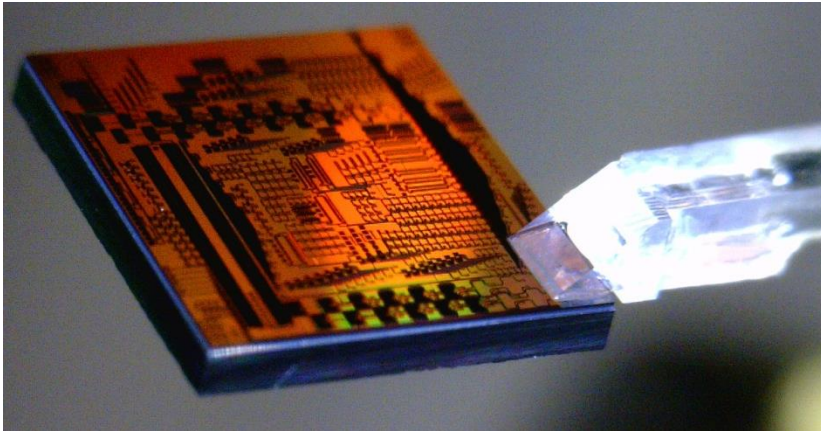
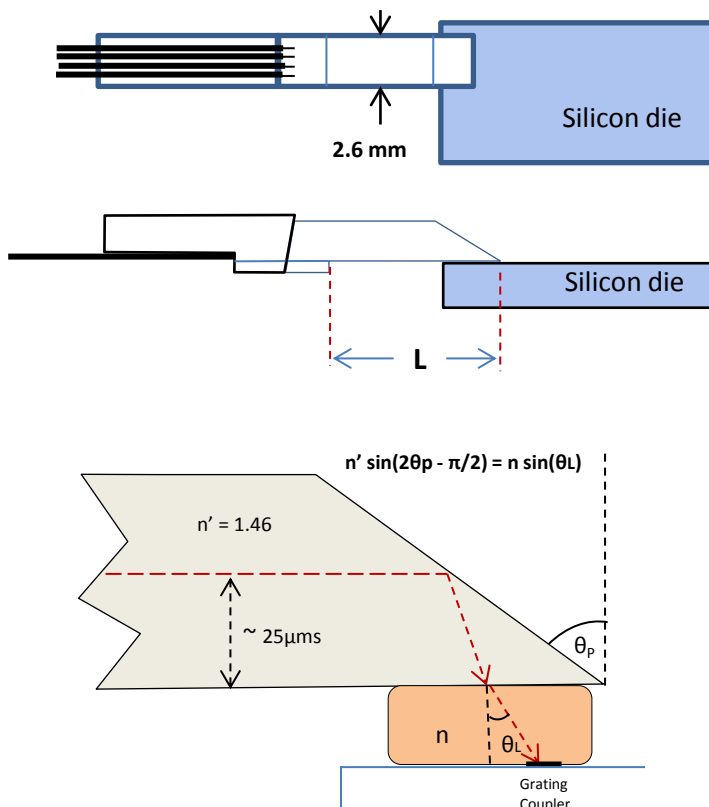
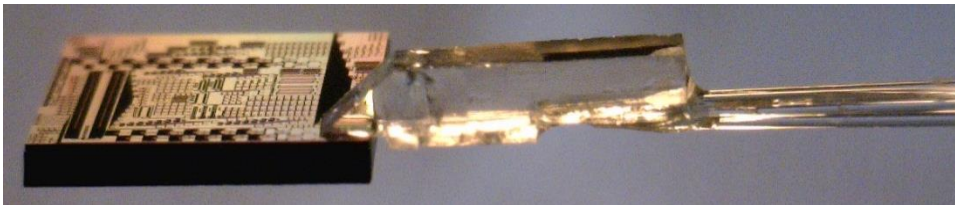




In-Line Coupling Element (ICE) for Bonded Grating Coupling to Silicon PICs



OpSIS IME-001 test die



Specifications

- 2 to 16 channels, 127 or 250µm contiguous pitch, others available
- Total length 12 to 24mm; L~10 mm
- SM or PM fiber, FC/APC connectors, fiber lengths > 1 m
- PM extinction ratio ≥ 21 dB
- Typical excess loss ≤ 1 dB
- Specify θ_{polish} for desired θ_{Launch} ; accuracy $\pm 0.5^\circ$
- Available as individual unit, or aligned and bonded to a silicon die
- Can be re-polished to accommodate angle-changes or handling-damage
- To ensure product & process compatibility, consult with PLCC before die fabrication